

## INSTALLATION GUIDE

# 2600 2600M

### Advanced Remote Vehicle Starter With Security System

*AUTOMATIC AND MANUAL  
TRANSMISSION MODELS*

[WWW.ULTRASTARTERS.COM](http://WWW.ULTRASTARTERS.COM)

WARNING!! NEVER INSTALL A  
AUTOMATIC REMOTE STARTER  
IN A MANUAL TRANSMISSION VEHICLE  
SERIOUS INJURY OR DEATH CAN RESULT

#### TECH SUPPORT

Western Canada 1 800 279-0636

United States: 1 866 698-5872

Eastern Canada. Bilingual Support: 1 800 268-0683

E-Mail Tech Support: [support@ultrastarters.com](mailto:support@ultrastarters.com)

Check Our Web Site: [www.ultrastarters.com](http://www.ultrastarters.com)

#### FCC/ID Notice

This device complies with Part 15 of the FCC rules. Operation is subject to the following conditions:

- (1) This device may not cause harmful interference, and
- (2) This device must accept any interference received, including interference that may cause undesired operation.

CAUTION: Changes or modifications not expressly approved by the part responsible for compliance void the user's authority to operate this device.

# Installation Guide

## TABLE OF CONTENTS

<b>2600 Wiring Diagram</b>	<b>Page 3</b>
<b>Pre-Installation</b>	<b>Page 4</b>
Components	
Recommended Pre-Installation Procedures	
Recommended Install procedures	<b>Wire</b>
<b>Connectors</b>	<b>Page 5</b>
6 Pin Connector	
14 Pin Connector	
3 Pin Red Connector	
4 Pin Blue Connector	
Jumper Selections	
<b>Installation</b>	<b>Page 6-7</b>
Basic Installation - Quick start	
Plugging In The Module	
Auto Tach Learn	
Shock Sensor Programming	
<b>Programming</b>	<b>Page 7-11</b>
Program Overview & <b>System Reset</b>	
Program Menu 1 (User Settings)	
Program Menu 2 (Alarm Settings)	
Program Menu 3 (Starter Settings)	
Program Menu 4 (Tach Settings)	
<b>Other Features And Operations</b>	<b>Page 12</b>
Reservation Mode	
Transmitter Programming	
Battery Replacement	
Service mode	
Remote Service Mode	
<b>System Operation</b>	<b>Page 14-15</b>
<b>Relay Diagrams</b>	<b>Page 16</b>

## DIAGNOSTICS

### PARK LIGHTS

- 3 Flashes
- 3 Slow Flashes
- 4 Flashes
- 4 Slow Flashes
- 5 Flashes
- 6 Flashes
- 7 Flashes
- 8 Flashes

### STATUS LED

- Series of 3 Flashes
- LED's On Solid
- Series of 4 Flashes
- Series of 4 Flashes
- Series of 5 Flashes
- Series of 6 Flashes
- Series of 7 Flashes
- Series of 8 Flashes

### DIAGNOSTIC CODE

- Door Opened "M" Models
- System Is In Service Mode
- Hood or Brake Before Start
- Not in Reservation Mode "M" units
- Hood Pin Opened
- Brake Pedal Shutdown
- Tach Lock-Out
- 3 Start Attempts with no start

If the remote starter has a failed start attempt or if a safety input is activated the Diagnostic Memory will store up to four shutdowns in memory. This information can then be accessed to determine the source of the shutdown.

#### To Enter Diagnostic Mode:

**Step 1** - Turn the ignition on wait two seconds then turn off. Press the Program Button and release.

**Step 2** - The system will respond with three park light flashes and the siren will chirp the same number of times as the events in memory. ( Maximum four events, four chirps)

**NOTE:** If the siren does not chirp, there are no events in memory.

**Step 3** - Press the Program Button once to view the last shut down code. The siren will chirp once to confirm code one. (If the siren does not chirp, there are no codes in memory).

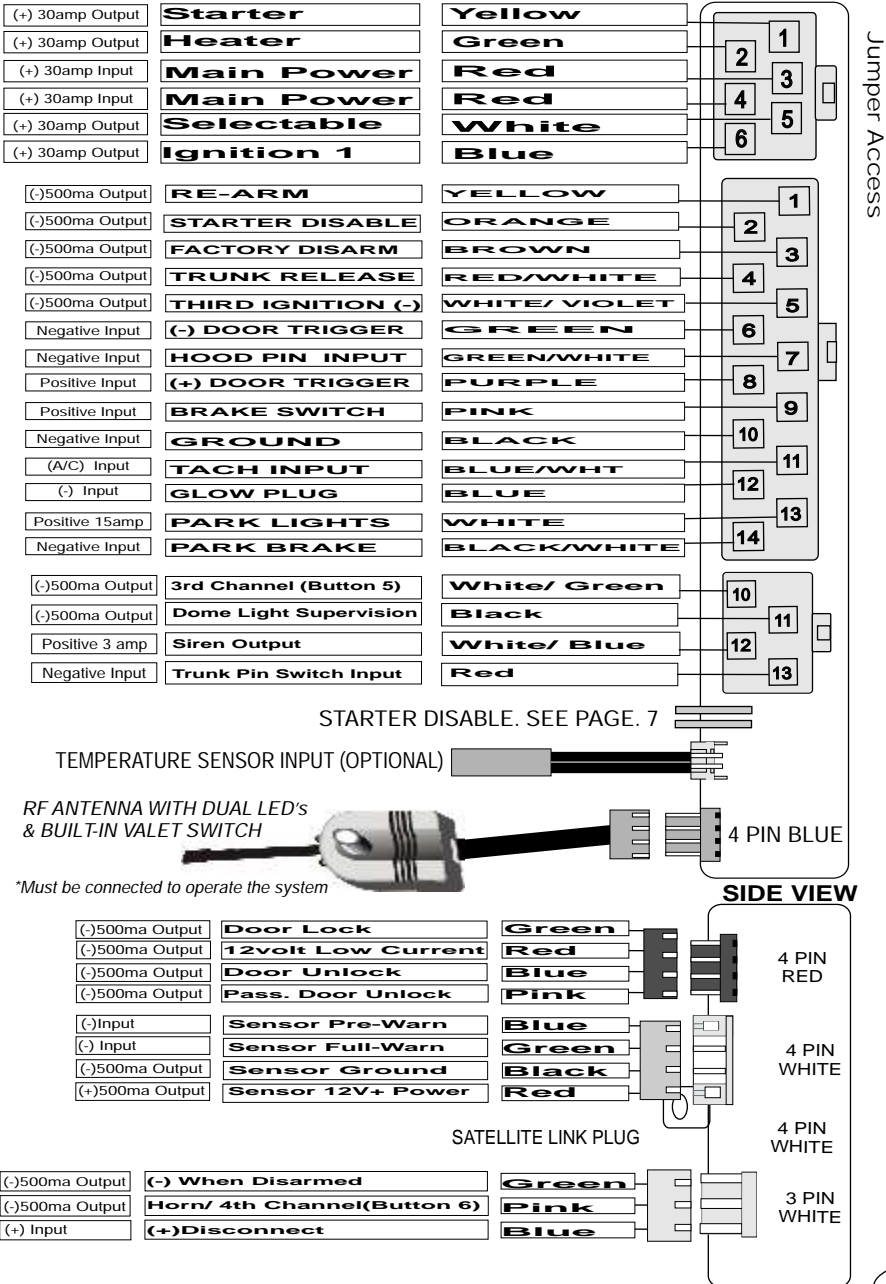
**Step 4** - The LED's on the antenna will flash a code corresponding to a shut down trigger. Press the Program Button again to check the second code. The siren will chirp twice to confirm code two.

**Step 5** - To **Clear Diagnostic Memory**. While in Diagnostic Mode press and hold the Program Button for five seconds. The park lights will flash and the siren will chirp once.

**NOTE:** Once diagnostic memory has 4 improper shutdown events in memory, the system will not record any further shutdown events until the system memory has been cleared.

# Installation Guide

## WIRING DIAGRAM



\*\*\*500ma outputs are low current and are designed to activate relays

## INSTALLATION TIPS

### Components

---

- Control module
- Remote transmitter(s)
- Antenna with built in Program Button and LED's
- 6 pin main harness with dual 30amp power inputs
- 14 pin harness
- 4 pin square harness.
- 4 pin keyless entry harness
- 4 pin Aux. sensor harness
- Multi-tone Siren
- Hood pin safety switch
- Installation guide
- Owners manual

### Recommended Pre-Installation Procedures

---

#### **BEFORE STARTING INSTALLATION:**

- Discuss the optional features with the customer.
- Take a few minutes to review the installation and owners manuals.
- Check if the vehicle has a factory security or anti-theft system.  
\*If equipped, inform the customer of addition parts and labour.
- Do a walk around the vehicle and check for any damage.
- If installing a LED discuss the placement with customer before installing.

**Note: This remote starter is designed for fuel injected and diesel engines.**

### Recommended Installation Procedures

---

**Proper Connections** - Remote Starters can handle loads of up to 30 amps for extended periods of time. It is **CRITICAL** to insure that ALL high current connections are properly soldered and insulated with quality electrical tape. Failing to insure proper connections will result in warranty being VOID and can result in a FIRE. The manufacturer is not responsible for any such damages. It only takes a few more minutes to do the job RIGHT.

**Under Hood Connections** - Route the hood pin and tach wires through the firewall into the engine compartment. Always try to pull the wires through a factory rubber grommet. If drilling through the firewall, **BE CAREFUL**. Check for obstructions on both sides of the firewall. After drilling use a snap in grommet to protect the wires from sharp edges.

**Installing the External Long Range Antenna** - To insure the best possible reception, place the antenna in the center of the windshield, behind the rear view mirror. Before attaching to the glass ensure that the surface is clean and dry. For best results with range, place the antenna below the tint screen. Run the cable under the head liner and behind the A-pillar panel. Be careful not to pinch the antenna cable. Plug the antenna into the **BLUE** connector on the Control Module.

**NOTE:** This step is not used on Alarm Only Units with no External Antenna.

**Mounting The Control Module** - **Never** mount the module in the engine compartment. Select a location under the dash to install the main module. Be certain that the module is securely attached and does not obstruct any serviceable areas. Do not force or jam the module into tight places instead of mounting. The module must be free from all moving parts such as brake, clutch and gas pedal linkages. Do not place the module directly in front of a heater vent.

**Testing The System** - When the installation is complete, it will be necessary to test that the system is working correctly. The system's default programming will work on the majority of vehicles, but might need to be adjusted for some applications. If the installation requires special timing or additional features, proceed to Program Mode.

**ATTENTION:** The Hood Pin Safety Switch **MUST** always be connected!!

**NOTE:** Always inform user to place system in Service Mode before any service work is performed on the vehicle.

# Installation Guide

# WIRING CONNECTORS 2600

## 6 Pin Power Connector

<b>Yellow</b>	Starter	30amp output	<i>12volts during crank only.</i>
<b>Green</b>	Heater	30amp output	<i>12volts in accessory. Off during start.</i>
<b>Red</b>	12 power	30amp input	<i>Constant 12volt power at ignition harness.</i>
<b>Red</b>	12 power	30amp input	<i>Constant 12volt power at ignition harness.</i>
<b>Blue</b>	Ignition 1	30amp output	<i>12volts in ignition and start positions.</i>
<b>White</b>	Selectable	30amp output	Jumper Selectable. <b>See Page 5.</b>

## 14 Pin Connector

<b>Yellow</b>	Re-Arm	0.75sec Pulse With Lock And On Shutdown.
<b>Orange</b>	(-) Output	Negative While Locked - <b>**Starter Program Mode.</b>
<b>Brown</b>	Disarm	0.75sec Pulse With Unlock And Before Start.
<b>Red/White</b>	2nd CH	Trunk Release - Active When The Unlock Button Is Held For 3seconds.
<b>White/Violet</b>	(-)Running	Negative Output While Running.
<b>Green</b>	(-) Door	Negative Door Trigger Input - <b>Manual Trans And Alarm Units Only.</b>
<b>Purple</b>	(+) Door	Positive Door Trigger Input - <b>Manual Trans And Alarm Units Only.</b>
<b>Green/White</b>	Hood Pin	Negative Hood Pin Input - <b>MUST BE CONNECTED!!</b>
<b>Pink</b>	Brake	Positive Brake Input - <b>MUST BE CONNECTED!!</b>
<b>Black</b>	Ground	System Ground Input - <b>MUST BE CONNECTED!!</b>
<b>Blue/White</b>	Tach	Tach Signal Input - <b>MUST BE CONNECTED!!</b>
<b>Blue</b>	Glow Plug	Negative Glow Plug Input - <b>DIESEL ENGINE ONLY. **Starter Program Mode.</b>
<b>White</b>	Park Lights	Positive Park light Output - <b>10 Amp Max.</b>
<b>Black/White</b>	Park Brake	Negative Park Brake Input - <b>Manual Transmission Models Only.</b>

## 4 Pin Connector Square

<b>White/Green</b>	Channel 3	<b>Programmable-</b> See Alarm Settings. <b>Menu 2. (Activate with button 5)</b>
<b>Black</b>	Dome Light	Negative Output For Dome Light Supervision.
<b>White/Blue</b>	Siren	Positive Output For Siren.
<b>Red</b>	Trunk Pin	Negative Input for Trunk Pin.

## 4 Pin Connector Red

<b>Green</b>	Door Lock	Door Lock Output - <b>Programmable - Menu 1 Setting 3.</b>
<b>Red</b>	12 Volts	<b>Low Current Output.</b> Use With Voltage Inverter
<b>Blue</b>	Door Unlock	Door Unlock Output - <b>Programmable - Menu 1 Setting 3.</b>
<b>Pink</b>	2nd Unlock	Door Unlock Output - <b>Programmable - Menu 1 Setting 3.</b>

## 3 Pin Connector White

<b>Green</b>	(-) Disarmed	Negative Output When The System Is Disarmed.
<b>Pink</b>	Horn/Ch.4	Horn or 5th Channel Output. <b>See page 9 (Activate with button 6)</b>
<b>Blue</b>	(+) Disconnect	(+) Disconnect Or Instant Start Trigger.

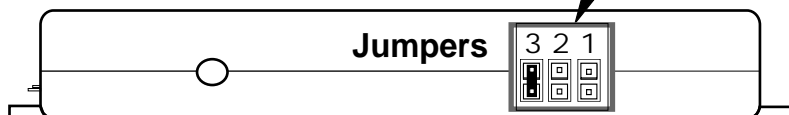
## Jumper Selections

The jumpers control the output on the white wire from the six pin harness. Place the jumpers in the above order to change the output.

**Note: The default setting is second ignition.**

Output on White wire	Jumper position
Second Starter	Position 1
Second Accessory	Position 2
Second Ignition	Position 3

## Back View Of Module



# Installation Guide

## QUICK START INSTALL

### Step 1 - Connect All Of the Following Wires

#### 6 Pin Power Connector

<b>Yellow</b>	<b>Starter Output</b>	Connect To The Vehicles Starter Wire.
<b>Green</b>	<b>Heater Output</b>	Connect To The Vehicles Accessory Wire.
<b>Red</b>	<b>12 power Input</b>	Connect to Constant 12 Volt Power Source- <b>High Current.</b>
<b>Red</b>	<b>12 power Input</b>	Connect to Constant 12 Volt Power Source- <b>High Current.</b>
<b>Blue</b>	<b>Ignition 1 Output</b>	Connect To the Vehicles Primary Ignition.
<b>White</b>	<b>Selectable Output</b>	Jumper Selectable Output. (Default 2nd Ignition) <b>See Page 5.</b>

#### 14 Pin Power Connector

<b>Black</b>	<b>System Ground</b>	Connect To Chassis Ground.
<b>Pink</b>	<b>Brake Switch</b>	Connect To (+) When Brake is Applied.
<b>White</b>	<b>Park Lights</b>	Connect To (+) Park Light System.
<b>Green/White</b>	<b>Hood Pin</b>	Connect To Hood Pin Switch.
<b>Blue/White</b>	<b>Tach Wire</b>	Connect To Tach Source.
<b>White/Blue</b>	<b>Siren / Horn</b>	Connect To (+) Siren or Horn.
<b>Green or</b>	<b>(-) Door Input</b>	Connect the Green wire to a (-) door pin system.
<b>Purple</b>	<b>(+) Door Input</b>	Connect the Purple wire to a (+) door pin system.

#### Manual Transmissions Only

**Black/White Park Brake** Connect (-) Parking Brake  
Manual transmission vehicles must have a "**M**" Series Remote Starter Installed. Manual Transmission Units Must Be Placed Into Reservation Mode To Operate. **See Page 12.**

### Step 2- Plug-In The Module

When all the connections are done, the control module can be plugged in. Before connecting the control module, make sure the ignition is in the **OFF** position. Plug in the 6 pin harness then the 14 pin followed by any other connectors that were used.

### Step 3- Auto Tach Learn

- 1) Make all the required wire connections and plug-in the Unit.  
\*\*The park lights will flash and the siren will chirp twice upon power up.
- 2) Turn the Ignition Key ON. (The Park Lights will turn on).
- 3) Start the vehicle, the LED's on the antenna will come on to confirm tach signal is detected\*\*, then after 30-35 seconds the park lights will turn off then flash twice to confirm tach learning.  
\* **The system will flash the park lights seven times if not tach learned and the start button is pressed. The system must be tach learned before remote starting.**  
\*\* **If the LED's do not come on during tach learn, a proper tach signal was not detected.**

**Note:** If the park lights do not flash in auto tach learn mode, check that the Ignition 1 (Blue) wire does not turn off during crank. If the ignition wire is good, it may be necessary to connect to a different tach source. For best results connect the tach wire to the coil pack or to a fuel injector wire. **If necessary See Page 11. for Tach Adjustment.**

#### Activate Self Learning Impact Sensor

- 1) Press the **LOCK** button on the remote 5 times in a row, once every second until the siren chirps 3 times and the park lights stay On.
- 2) While the park lights are on, strike the vehicle 3 times at the desired level to trigger the alarm.
- 3) The siren will respond with one chirp to confirm that the Shock Sensor is programmed.
- 4) Press the lock or unlock button to exit Shock Sensor learning.

### Your Basic Install Is Complete!

#### NOTES:

- 1) If the unit does not start, check the starter is not in Tach Lock Out or in Program Mode.
- 2) If the vehicle still does not start, check all connections and check for factory security.

## Programming Overview

Program mode allows you to adjust the settings and options of your system.

Your system has been intelligently designed by installers with years of experience. The system's default settings do not require any program changes in most cases. However, this system does incorporate a highly advanced programming system that includes 4 menus with numerous options and settings that can be easily adjusted for custom installations and applications.

Menu 1 - User Settings - Page 8

This program menu contains settings that adjust the way the system operates for the user.

Menu 2 - Alarm Settings - Page 9

This program menu contains settings that adjust the way the system operates for the user.

Menu 3 - Starter Settings - Page 10

This menu controls features and settings associated with remote car starter applications.

Menu 4 - Tach Settings - Page 11

This menu allows the programming of the tach signal and the manual adjustment of that setting.

## Entering Program Mode

### To Enter Program Mode

- 1) Make sure ignition is in the off position.
- 2) Within three seconds turn the key ON - OFF - ON - OFF - ON. **Leave in the "ON" position.**
- 3) Press and release the Program Button on the antenna one time.
- 4) The park lights will come on and the siren will chirp to confirm entering Program Mode.
- 5) Select the Desired Program Menu:

<b>Press Button #1</b>	<b>Lock</b>	<b>User Options</b>	<b>Page 8</b>
<b>Press Button #2</b>	<b>Unlock</b>	<b>Alarm Option</b>	<b>Page 9</b>
<b>Press Button #3</b>	<b>Start</b>	<b>Remote Start Options</b>	<b>Page 10</b>
<b>Press Button #4</b>	<b>#</b>	<b>Tach Adjustment Menu</b>	<b>Page 11</b>

- 6) The selected mode will be confirmed by a siren chirp and one park light flash.
- 7) The Program Menu may be changed at any time by pressing the transmitter buttons as above, this allows the installer to change a setting from one menu, then quickly jump to another menu and change another setting without re-entering the Program Mode.
- 8) To exit Program Mode, Turn the ignition key "OFF" or wait 30 second and the system will exit automatically. This will be confirmed by one long siren chirp and park light flash.

**Note:** If unit does not enter Program Mode, turn the ignition off for five seconds and repeat steps 1-4.

\*\* The first ignition(Blue wire) **MUST** be connected to the vehicle's first ignition wire. If it is not connected it will not be possible to enter the Program Modes.

## Changing the Programmable Settings

### To Select and Change A Program Setting:

- 1) Enter **Program Mode**.
- 2) Select the desired **Program Menu**. (See pages 8 - 11)
- 3) Press & release the **Program Button** the correct number of times to select the desired Program Setting(as listed on pages 8 - 11). The park lights will flash and the siren will chirp to indicate the current setting that is selected.
- 4) Press and hold the Program Button until the parking lights / siren confirm the selected setting. The park lights will flash and the siren will chirp to indicate the option selected within the setting.
- 5) Turn the ignition key "Off" to exit Program Mode.

NOTE: This procedure is listed in detail below each program setting on pages 8 - 11 of this manual.

## SYSTEM RESET

**STEP 1** - Within three seconds turn the key ON-OFF-ON-OFF-ON (**Leaving Key ON**).

**STEP 2** - Press and release the Program Button.

**STEP 3** -The park Lights will turn ON.

**STEP 4** - Press the Program Button a second time and hold for 8 seconds until the park lights flash and the siren will chirps three times.

**The system is now re-set to factory defaults.**

NOTE: Reset to defaults does not delete the transmitters from memory.

## PROGRAMMING

### PROGRAM MODE - USER SETTINGS

**Enter User Program Mode - See Page 7 for details on entering program mode**

#### Setting 1- Ignition Auto Lock

1 Ignition Lock & Unlock Enabled	1 Light Flash	Doors Lock / Unlock when the key is turned On/ Off
2 Ignition Lock Only	2 Light Flashes	Doors Lock when ignition key is turned ON only
*3 Ignition Auto Lock Disabled	3 Light Flashes	Doors do not Lock or Unlock with Ignition key

Press the Program Button 1 time to select setting 1 (This will be confirmed by 1 LED flash)  
Press and hold the Program Button until you receive the appropriate # of park light flashes and siren chirps.  
Release the Program Button. Press momentarily to move to next program step or repeat to change selection.

#### Setting 2- Horn Honk Settings

1 Lock & Unlock chirps Disabled	1 Flash	Chirps for Panic and Car Finder Mode only.
2 Lock & Unlock chirps Enabled	2 Flashes	Chirps for Lock, Unlock, Panic and Car Finder Mode Only.
*3 All chirps enabled	3 Flashes	Chirps for Lock, Unlock, Start, Panic and Car Finder Mode.

Press the Program Button 2 times to select setting 2 (This will be confirmed by 2 LED flashes)  
Press and hold the Program Button until you receive the appropriate # of park light flashes and siren chirps.  
Release the Program Button. Press momentarily to move to next program step or repeat to change selection.

#### Setting 3- Door Lock Options

1 Double Pulse Unlock	1 Flash	Single .75sec.Lock pulse and double Unlock Pulse
2 3 Second Lock & Unlock	2 Flashes	3 second pulses for Lock & Unlock
*3 0.75 Second Pulses	3 Flashes	0.75 second pulses for Lock and Unlock

Press the Program Button 3 times to select setting 3 (This will be confirmed by 3 LED flashes)  
Press and hold the Program Button until you receive the appropriate # of park light flashes and siren chirps.  
Release the Program Button. Press momentarily to move to next program step or repeat to change selection.

#### Setting 4 -Sensor - Enable / Disable

1 Sensors Disabled	1 Flash	Impact Sensors Disabled
* 2 Sensors Enabled	2 Flashes	Impact Sensors Enabled - Normal Operation

Press the Program Button 4 times to select setting 4 (This will be confirmed by 4 LED flashes)  
Press and hold the Program Button until you receive the appropriate # of park light flashes and siren chirps.  
Release the Program Button. Press momentarily to move to next program step or repeat to change selection.

#### Setting 5 - Passive / Active Arming

1 Passive Arming	1 Flash	System Auto Arms 30 seconds after last door is closed
2 Active Arming With Rearm	2 Flashes	System Auto-Arms if unlock is pressed and no door is opened within 30sec
* 3 Active Arming	3 Flashes	Alarm Arms Only with Transmitter

Press the Program Button 5 times to select setting 5 (This will be confirmed by 5 LED flashes)  
Press and hold the Program Button until you receive the appropriate # of park light flashes and siren chirps.  
Release the Program Button. Press momentarily to move to next program step or repeat to change selection.

#### Setting 6 - Active / Passive Locks

1 No Auto-Lock with Passive Arm	1 Flash	Doors do not auto-lock with passive arming
*2 Doors Auto-Lock with Passive	2 Flashes	DOORS LOCK WHEN PASSIVE ARMING

Press the Program Button 6 times to select setting 6 (This will be confirmed by 6 LED flashes)  
Press and hold the Program Button until you receive the appropriate # of park light flashes and siren chirps.  
Release the Program Button. Press momentarily to move to next program step or repeat to change selection.



### PROGRAM MODE - ALARM SETTINGS

**Enter Alarm Program Mode - See Page 7 for details on entering program mode**

#### Setting 1 - Car Finder

- |                  |                 |                          |
|------------------|-----------------|--------------------------|
| 1 Car Finder OFF | 1 Light Flash   | Car Finder Mode Disabled |
| *2 Car Finder ON | 2 Light Flashes | Car Finder Mode Enabled  |

Note: To operate the 4th channel on button #6, setting 7 must be programmed for 4th channel output.

Press the Program Switch 1 time to select setting 1 (This will be confirmed by 1 LED flash)

Press and hold the Program Switch until you receive the appropriate # of park light flashes and/or horn honks.

Release the Program Switch. Press the Program momentarily to move to next program step or repeat to change selection.

#### Setting 2 - Secure Valet Mode

- |                        |           |  |
|------------------------|-----------|--|
| 1 Secure Valet Active  | 1 Flash   | Valet only if ignition "ON" and valet switch held for 15 seconds |
| 2* Normal Valet Active | 2 Flashes | Valet if ignition "ON" and valet switch held for 5 seconds       |

Press the Program Switch 2 times to select setting 2 (This will be confirmed by 2 LED flashes)

Press and hold the Program Switch until you receive the appropriate # of park light flashes and/or horn honks

Release the Program Switch. Press the Program momentarily to move to next program step or repeat to change selection.

#### Setting 3 - Parking Light Output

- |                                      |           |   |
|--------------------------------------|-----------|---|
| 1 30 Second Parking Lights on Disarm | 1 Flash   | Park Lights on for 30 seconds on disarm                             |
| 2 Negative Park Light                | 2 Flashes | Switches the Park Light and the Trunk Release (3rd Channel) Outputs |
| 3* Normal Parking Lights             | 3 Flashes | 2 Park Light Flashes on disarm                                      |

Press the Program Switch 3 times to select setting 3 (This will be confirmed by 3 LED flashes)

Press and hold the Program Switch until you receive the appropriate # of park light flashes and/or horn honks.

Release the Program Switch. Press the Program momentarily to move to next program step or repeat to change selection.

#### Setting 4 - Horn Honk Timing - Pink wire on 3-pin white

- |         |           |                        |
|---------|-----------|------------------------|
| 1 5ms   | 1 Flash   | Short (Quiet) Pulses   |
| 2 20ms  | 2 Flashes | Long (Loud) Pulses     |
| *3 10ms | 3 Flashes | Normal (Medium) Pulses |

Press the Program Switch 4 times to select setting 3 (This will be confirmed by 4 LED flashes)

Press and hold the Program Switch until you receive the appropriate # of park light flashes and/or horn honks.

Release the Program Switch. Press the Program momentarily to move to next program step or repeat to change selection.

#### Setting 5 - 3rd Channel Settings- White/Green on 4-pin square

- |           |           |  |
|-----------|-----------|--|
| 1 Pulsed  | 1 Flash   | Pulsed for 0.75 seconds upon 4th Channel Activation                |
| 2 Latched | 2 Flashes | Latched until repeated or ignition "ON"                            |
| *3 Active | 3 Flashes | Active for as long a button is held on Transmitter as long as held |

Press Button 5 to activate the 3rd Channel Output.

Press the Program Switch 5 times to select setting 1 (This will be confirmed by 5 LED flashes)

Press and hold the Program Switch until you receive the appropriate # of park light flashes and/or horn honks.

Release the Program Switch. Press the Program momentarily to move to next program step or repeat to change selection.

#### Setting 6 - Car Jack Mode

- |                  |           |   |
|------------------|-----------|---|
| 1 Door & Button  | 1 Flash   | Car Jack is activated upon Button 4 or Door open while Ignition is "ON" |
| 2 Door, Button 4 | 2 Flashes | Car Jack is upon Button 4 or Door open or ignition "ON" and Ignition    |
| *3 Car Jack OFF  | 3 Flashes | No Car Jack Functions   |

Press the Program Switch 6 times to select setting 1 (This will be confirmed by 6 LED flashes)

Press and hold the Program Switch until you receive the appropriate # of park light flashes and/or horn honks.

Release the Program Switch. Press the Program momentarily to move to next program step or repeat to change selection.

#### Setting 7 - Horn / 4th Channel - Pink wire on 3-pin white

- |                |           |   |
|----------------|-----------|---|
| 1 4th Channel  | 1 Flash   | Pulsed output when activated by Button #4 |
| 2 Horn Honk 2  | 2 Flashes | Horn Honk Output - Full Alarm ONLY        |
| *3 Horn Honk 1 | 3 Flashes | Horn Honk with Arm & Disarm Chirps        |

Press Button 6 to activate the 4th Channel Output.

Press the Program Switch 7 times to select setting 7 (This will be confirmed by 7 LED flashes)

Press and hold the Program Switch until you receive the appropriate # of park light flashes and/or horn honks.

Release the Program Switch. Press the Program momentarily to move to next program step or repeat to change selection.

# Installation Guide

## PROGRAM MODE - STARTER SETTINGS

**Enter Starter Program Mode - See Page 7 for details on entering program mode**

### Setting 1- Special Door Lock/ Unlock Operations

1	Chrysler / VW Re-Arm	1 Flash	Unlock pulse before start and a lock pulse after start
2	GM Auto Re-Lock	2 Flashes	Lock pulse after remote starter shuts off
3*	Normal Operation	3 Flashes	No additional re-lock pulses

Press the Program Button 1 time to select setting 1 (This will be confirmed by 1 LED flash)

Press and hold the Program Button until you receive the appropriate # of park light flashes and siren chirps.

Release the Program Button. Press momentarily to move to next program step or repeat to change selection.

### Setting 2- Gas/ Diesel Mode- Blue Wire on 14-Pin

1	Diesel Glow Plug	1 Flash	Waits a Maximum of 3:20 second before starting.
2	Timed Delay	2 Flashes	Ignition ON for 10 seconds before engaging remote starter
3*	Gas Mode operation	3 Flashes	Waits 2 seconds before engaging starter output

Press the Program Button 2 times to select setting 2 (This will be confirmed by 2 LED flashes)

Press and hold the Program Button until you receive the appropriate # of park light flashes and siren chirps.

Release the Program Button. Press momentarily to move to next program step or repeat to change selection.

### Setting 3- Rearm Output- Yellow Wire on 14-Pin

1	Type 1	1 Flash	Pulse after start and with lock
2	Type 2	2 Flashes	Pulse after start only
3*	Factory Re-arm	3 Flashes	0.75 second pulse with lock and after shutdown

Press the Program Button 3 times to select setting 3 (This will be confirmed by 3 LED flashes)

Press and hold the Program Button until you receive the appropriate # of park light flashes and siren chirps.

Release the Program Button. Press momentarily to move to next program step or repeat to change selection.

### Setting 4- Run Time

1	30 Min Run Time	1 Flash	Remote Starter runs for 30min when activated
2	45 Min Run Time	2 Flashes	Remote Starter runs for 45min when activated
3*	15 Min Run Time	3 Flashes	Remote Starter runs for 15 min when activated

Press the Program Button 4 times to select setting 4 (This will be confirmed by 4 LED flashes)

Press and hold the Program Button until you receive the appropriate # of park light flashes and siren chirps.

Release the Program Button. Press momentarily to move to next program step or repeat to change selection.

### Setting 5-Maximum Crank Time

1	10 Seconds	1 Flash	10 sec Max time that starter will stay engaged
2	3 Seconds	2 Flashes	3 sec Max time that starter will stay engaged
3*	5 seconds	3 Flashes	5 sec Max time that starter will stay engaged

Press the Program Button 5 times to select setting 5 (This will be confirmed by 5 LED flashes)

Press and hold the Program Button until you receive the appropriate # of park light flashes and siren chirps.

Release the Program Button. Press momentarily to move to next program step or repeat to change selection.

### Setting 6- Starter Kill - Orange wire on 14-Pin Con.

1	Passive Disable	1 Flash	Ground after 30 seconds, when locked and when remote started.
2*	Active Starter Disable	2 Flashes	Ground when armed/ remote started

Press the Program Button 6 times to select setting 6 (This will be confirmed by 6 LED flashes)

Press and hold the Program Button until you receive the appropriate # of park light flashes and siren chirps.

Release the Program Button. Press momentarily to move to next program step or repeat to change selection.

### Setting 7- Starter Kill - Orange wire on 14-Pin Con.

1	Horn Output	1 Flash	Pulsed output with .
2*	Active Starter Disable	2 Flashes	Ground when armed/ remote started

Press the Program Button 7 times to select setting 7 (This will be confirmed by 7 LED flashes)

Press and hold the Program Button until you receive the appropriate # of park light flashes and siren chirps.

Release the Program Button. Press momentarily to move to next program step or repeat to change selection.

## Installation Guide

# 2600

### Setting 7- Sensor Disconnect - Blue wire on 3-Pin Con.

- |    |                         |           |  |
|----|-------------------------|-----------|--|
| 1  | Positive Input To Start | 1 Flash   | Positive pulse will activate remote starter.                     |
| 2  | Positive Disconnect     | 2 Flashes | Alarm will trigger if disconnected from 12 volts.(Same as below) |
| 3* | Positive Disconnect     | 3 Flashes | Alarm will trigger if disconnected from 12 volts.                |

Press the Program Button 7 times to select setting 7 (This will be confirmed by 7 LED flashes)

Press and hold the Program Button until you receive the appropriate # of park light flashes and siren chirps.

Release the Program Button. Press momentarily to move to next program step or repeat to change selection

### Setting 8- Safety Start

- |    |                   |           |  |
|----|-------------------|-----------|--|
| 1  | Safety Start Mode | 1 Flash   | Press twice to activate the remote starter |
| 2* | Normal Operation  | 2 Flashes | Press once to activate the remote starter  |

Press the Program Button 7 times to select setting 7 (This will be confirmed by 7 LED flashes)

Press and hold the Program Button until you receive the appropriate # of park light flashes and siren chirps.

Release the Program Button. Press momentarily to move to next program step or repeat to change selection.

## PROGRAM MODE - TACH SETTINGS

### Setting 1- Method 1- Auto Tach Learning- See page 6 for Auto Tach Learning

### Setting 1- Method 2- Low Idle Tach Learning

This option is used for vehicles that maintain a high or erratic idle after starting and need more than 10 seconds to establish a stable idle.

Step 1 - Enter Program Mode (Ignition ON-OFF-ON-OFF-ON) then press the Program button on the antenna 1 time.

Step 2 - Enter Program Mode 4 - Press the # button on the remote.(Button #4).

Step 3 - Start Vehicle - Using the ignition key, make sure not to turn the key off at any time or your will exit programming.

Step 4 - Press the Button - One time (Led will start flashing in single cycles) then press and hold Program (5sec).

Step 5 - Release Program - Led should come on steady to indicate correct tach signal the park light will flash to confirm.

### Setting 2- Adjust For Over-Crank

Step 1 - Enter Program Mode (Ignition ON-OFF-ON-OFF-ON) then press the Program button on the antenna 1 time.

Step 2 - Enter Program Mode 4 - Press the # button on the remote.(Button #4).

Step 3 - Press the Program Button - 2 times (Led will start flashing 2 times).

Step 4 - Press and Hold Program - For 5 seconds until parking lights flash (each time lights flash tach is reduced 5%).

Step 5 - Release Program - Exit Program Mode and remote start to test.

### Setting 3- Adjust For Under-Crank

Step 1 - Enter Program Mode (Ignition ON-OFF-ON-OFF-ON) then press the Program button on the antenna 1 time.

Step 2 - Enter Program Mode 4 - Press the # on the remote.(Button #4).

Step 3 - Press the Program Button - 3 times (Led will start flashing 3 times).

Step 4 - Press and Hold Program - For 5 seconds until parking lights flash (each time lights flash tach is increased 5%).

Step 5 - Release Program - Exit Program Mode then remote start to test.

## Anti Car Jacking Mode

**ENSURE THAT USER IS FULLY TRAINED ON THIS FEATURE!  
ONLY USE THIS FEATURE WHEN SPECIFICALLY REQUESTED. ENSURE THAT USER IS TRAINED ON THE  
OPERATION OF THIS FEATURE IF NOT, UNWANTED RESULTS MAY ARISE.**

When activated, the system waits 30 seconds then flashes LED rapidly for 30 seconds, then chirps siren as a warning for 10 seconds then goes into full alarm .

**ACTIVATING CAR JACK MODE-** Programmable - Menu 1, Setting 5.

Activates upon any of the following steps:

- Mode 1 & 2 While ignition is "on" press & release # button.

- Mode 1 & 2 Open door while ignition is "on".

- Mode 2 only Each time ignition is turned "on"

**DEACTIVATING CAR JACK MODE**

1. During countdown period - Turn the ignition "On" then press and release the antenna button.

2. After the alarm has activated - Turn the ignition "Off then On" then press and hold the antenna button for 8 seconds .

## OPERATIONS

### Reservation Mode - Manual Transmission

Manual Transmission Remote Starters must have both the door trigger and park brake wires connected. Most installs will require a clutch bypass. This is a temporary bypass. The clutch should only be bypassed during the activation of the remote starter. Never disconnect or alter the switch to be always bypassed. Always use a "M" Series Remote Starter on a manual transmission vehicle.

**Never** install a automatic Remote Starter model into a manual transmission vehicle. It is not recommended to install a remote starter on a convertible type vehicle. If doing so It is highly recommended that a radar sensor is installed to cover the proximity of the gear shift lever. If the radar sensor is tripped the remote starter will exit Reservation Mode.

**To enter Reservation Mode, the following steps must be followed.**

- Step 1** - While the vehicle is running, place the transmission in neutral and apply the parking brake.
- Step 2** - Press and release the brake pedal. The park lights will activate.
- Step 3** - Turn the ignition key off and the vehicle will stay running.
- Step 4** - Exit the vehicle and close the door. The vehicle will then shut off.
- Step 5** - The vehicle can now be safely remote started.

**NOTE:** If the vehicle has a dome light delay, the vehicle may stay running until the dome light turns off. This is normally no longer than 30 seconds. Reservation Mode will automatically be exited if the doors of the vehicle are opened. The set-up mode will then have to be repeated. Reservation Mode Must be set-up each time the vehicle is parked.

**Note:** If the vehicle is not in Reservation Mode and the Start button is pressed, the system will flash the park lights four times slowly.

### Transmitter Programming

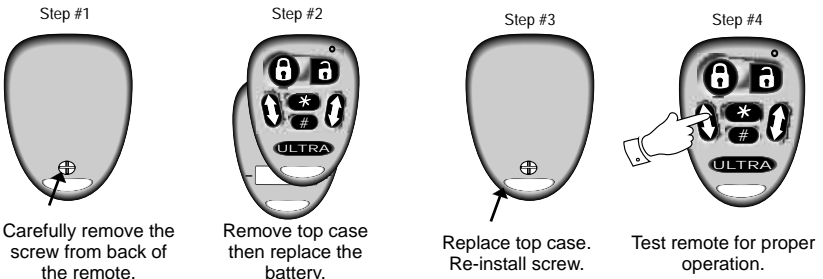
- Step 1** - Within three seconds turn the ignition Key ON-OFF-ON-OFF-ON - **Leaving Key ON**
- Step 2** - Press and hold the Program Switch - Parking Lights will come ON \*\*if park-lights do not come on at this point, turn key off for 5 seconds, the repeat step 1.
- Step 3** - Continue to hold the Program Switch until park lights go out.
- Step 4** - Press the **LOCK** button on each of **1st car** remote's and press the **#** button on each of the **2nd car** remote's of the transmitters to be programmed. The park lights will flash once and the horn will honk once each time a new code is learned.

**Note:** Transmitter programming must done quickly. Do not pause more than one second between each transmitter. **All the transmitters** to be used must be programmed at the same time. **All transmitters not programmed at this time will be erased from memory for security. The system holds a maximum of 4 transmitter codes including 2nd car remote codes.**

You can program the same remote as a 1st car remote in one vehicle and as a 2nd car remote in a second vehicle.

### Battery Replacement

The transmitter battery should be changed at least once every year to maintain proper operating range. Replace with quality 23A 12volt Alkaline battery.



## System Service Mode



### ACTIVATING SERVICE MODE

1. While the ignition is "ON" press and hold the Program Button for five seconds. The park lights will flash and the siren will chirp five times to confirm that the system is in Service Mode.
2. While in Service Mode the remote start functions will be disabled and LED's will be "ON" steady. Door locks and trunk release are still operational.

### DEACTIVATING SERVICE MODE

1. While the ignition is "ON" press and hold the Program Button for five seconds. The park lights will flash and the siren will chirp two times to confirm that the system has exited Service Mode.
2. Remote start functions will return to normal operation.

**Note: If the system is in Service Mode and the start button on the remote transmitter is pressed the park lights will flash 3 times.**

## Service Mode- By Remote



### SERVICE MODE ACTIVATED

- 1 - Press and Release button #4 Then press and hold Button #4 again for 6 seconds until Status LED comes on Steady

**NOTE: The siren will chirp 5 times as confirmation of Service Mode.**

### SERVICE MODE DEACTIVATED

- 1 - Press and Release button #4 Then press and hold Button #4 again for 6 seconds until Status LED turns off.

**NOTE: The siren will chirp 2 times as confirmation.**

## WARRANTY- Optional Three year & lifetime warranty available. See Dealer For Details.

The manufacturer warrants to the original purchaser of their remote starters and alarms, that the product shall be free from defects in material and workmanship. However, should this product be proven to be defective, within a two year period from the original date of purchase, the manufacturer will, without charge to the purchaser (excluding any charges incurred to have the product delivered to the manufacturer), repair or replace any part of the remote starter and/or alarm which the manufacturer agrees to be defective. All warranties apply on to the original purchaser and the vehicle in which it is originally installed. Repairs or replacement of defective modules shall remain at the discretion of the manufacturer. All other parts, components, accessories and/or optional equipment pertaining to the remote starter and alarm are not included in the manufacturer's warranty. **This warranty is non-transferable.** Request for warranty service from any Factory Authorized Dealer **must be accompanied with the original purchase receipt or have product registered by authorized dealer on manufacturer's website.** Failure to comply with any of these conditions may result in warranty being voided.

This warranty does not cover the following: removal and reinstall labour charges, shipping charges, abuse, misuse, or accidental damages to the remote starter and alarm, automobile, and/or parts thereof. This warranty is void upon modification, repairs, or alterations of any part of the System. The manufacturer does not guarantee or insure against theft of the vehicle or its contents. Alarm models are designed only to act as a deterrent against possible theft. This alarm may qualify for auto insurance discounts, contact your Insurance Agent for further information. The manufacturer shall not be held liable for any consequential damages due to breach of this or any other warranty, expressed, or implied. This warranty gives you specific legal rights. Your specific legal rights may vary for each region.

**CERTAIN DAMAGES EXCLUDED** - The manufacturer expressly disclaims any liability or responsibility for incidental damages caused by the product, including economic loss, loss of use of the product, car rentals, or any other costs relating to the care and custody of the product. The manufacturer disclaims liability or responsibility for any consequential damages caused by the product or resulting from its use, including the cost of repairing or replacing other property damaged by the product or caused by its use, whether or not the product is working properly. The product is intended to deter unauthorized use of the vehicles in which it is installed. The manufacturer does not warrant that the product is fool-safe against theft and/or vandalism and/or human error or misuse. The manufacturer accepts no liability or responsibility for any damage of any kind whatsoever caused to any vehicle in which the product is installed or any resulting damage from its use. The manufacturer accepts no responsibility or liability for any damage resulting to or theft of the vehicle or its contents, caused or alleged to be caused, directly or indirectly, by failure of the product.

# Installation Guide

## OPERATIONS



### Lock Doors

1. Press and release the *LOCK* button on the remote transmitter.
2. The park lights will flash and the horn (optional) will honk one time.
3. The doors will lock. (With Keyless Entry option)
4. The LED's on the antenna will start flashing within five seconds.



### Unlock Doors

1. Press and release the *UNLOCK* button on the remote transmitter.
2. The park lights will flash and the horn (optional) will honk two times.
3. The doors will unlock. (With Keyless Entry option)
4. The LED's on the antenna will stop flashing.

### Optional Driver's Door Unlock Feature

The driver's door unlock feature will unlock the driver's door separately from the other doors.

1. Press and release the *UNLOCK* button once to unlock driver's door.
2. Press and release a second time within two seconds to unlock all other doors.



### Silent Lock And Unlock

1. Press and release the *LOCK & UNLOCK* buttons at the same time.
2. If locked this will unlock the doors without honks, the park lights will flash two times to confirm the doors unlocked.
3. If unlocked this will lock the doors without honks, the park lights will flash one time to confirm the doors locked.



### Trunk Release

1. Press and hold the *UNLOCK* button for three seconds.
2. The doors will unlock, continue holding the unlock button for three more seconds, the trunk release will then activate. The trunk release will be confirmed by one park light flash.

Note: The trunk release output will not activate when the ignition key is in the "On" position.



### Car Finder Mode

1. Press and hold the # button for two seconds.
2. The system will flash the park lights and honk the horn (optional) five times.
3. This feature can help find your vehicle in a crowded parking lot.

### Panic Mode

1. Press and hold the *LOCK* button for three seconds.
2. The park lights will flash and horn will honk (optional)

### PANIC MODE DISABLE

- Press the *LOCK* button to disable the panic mode and to lock the doors.
- Press the *UNLOCK* button to disable the panic mode and unlock the doors.
- Panic Mode will stay activated until disabled by the remote transmitter.



### Auxiliary 1 - Channel 3/ Button 5

Press and hold button #5. The doors will unlock and the siren will chirp twice, continue to hold the button and the output will activate followed by one chirp. This output can be used for addition accessories such as sliding door control and window roll up. See dealer for details.



### Auxiliary 2 - Channel 4/ Button 6

Press and hold button 6. The doors will unlock and the siren will chirp twice, continue to hold the button and the output will activate followed by one chirp. This output can be used for addition accessories such as sliding door control and window roll up. See dealer for details.



### 2nd Car Operation

Press the # button at the same time as the command for the second car. This feature requires Special programming

& = Lock doors. (Hold For Panic Mode)  
Press again and hold for constant Lock.

= For 2 seconds for Car Finder

& = Press Once to Unlock the doors.

Then = Hold 6 seconds to enter/ exit Service Mode

& Hold for Trunk / Channel 3

& = Remote Start -(2 Times for Safety Start)  
For 3 seconds to shut down the starter.

& = To activate Aux 1(Sliding Door etc..)

Then & = Enter Timer/ Temperature Mode

& = To activate Aux 2(Sliding Door etc..)

## Reservation Mode - Manual Transmission Models Only

### TO INSURE SAFE STARTING OF MANUAL TRANSMISSION VEHICLES

1. With the vehicle running, apply the park brake then press and release the brake pedal.
2. The park lights will flash and the horn will honk (optional) to confirm that reservation mode has been activated.
3. Remove the key from the ignition, and exit the vehicle. (The vehicle will remain running until the door is closed)
4. The vehicle will shut off. (If the vehicle has a delay dome-light, the vehicle may run until the dome-light turns off)

### THE VEHICLE IS NOW IN RESERVATION MODE AND MAY BE REMOTE STARTED.

Note: To enter the vehicle without canceling the Reservation Mode, the remote starter must be On while the door is opened

#### Remote Start



1. Press and release the \* button.
2. The Park lights will flash and the horn(optional) will honk one time.
3. When the vehicle has started, the park lights four times then remain "On" while the vehicle is running.
4. The vehicle will continue to run for the programmed runtime. (normally 15 minutes).

#### Extended Run Time

1. Press and release the \* button while the vehicle is remote started.
2. The system will respond with one park light flash and one horn honk (optional) to confirm Extended Runtime. The system will reset the run time, (normally 15 minutes).

#### Remote Stop



1. Press and hold the \* button for three seconds. The remote starter will shut down.
2. The park lights will flash two times and the horn(optional) will honk two times.

Note: Pressing the brake pedal or opening hood will also deactivate the remote starter.

#### Idle Mode



1. While the vehicle is running with key, press the \* button.
2. The park lights will turn on and the horn(optional) will honk once.
3. Turn the ignition key "Off" and the vehicle will continue to run.
4. Exit the vehicle and leave it running without the keys. Always lock the doors if the vehicle is left running.

#### Timer/ Optional Temperature Start Mode.



1. Press and release the # button, then press and hold the \* button for six seconds. The parking lights turn "On" to confirm entering Low Temperature Mode.
2. While the park lights are "on" the start cycle can be selected.
 

1 hour cycle or 0c	Press the LOCK button	1 park light flash
2 hour cycle or -5c	Press the UNLOCK button	2 park light flashes
3 hour cycle or -15c	Press the * button	3 park light flashes
4 hour cycle or -25c	Press the # button	4 park light flashes
3. The system will start the vehicle at the selected start cycle. The vehicle will run for it's runtime then shut off. The system will repeat this for a maximum 24 hour period.
4. The temperature sensor must be installed for temperature activation. The system will only trigger 1 time each 2 hours. If the sensor is not installed the unit will activate timer mode.

#### To Cancel Timer/ Temperature Start Mode

1. Press and release the # button, then press and hold the \* button for four seconds.
2. The System will respond with two flashes and two horn honks (optional).

Note: Remote starting or starting with the key will also cancel Timer/ Temp Mode.

## Diagnostics

If the system fails to start, a diagnostic will be displayed by the vehicles park lights. Count the number of flashes then compare to the chart below. The system will not function until the problem causing the code is corrected.

### PARK LIGHTS

- 3 Flashes
- 3 Slow Flashes
- 4 Slow Flashes
- 5 Flashes
- 5 Slow Flashes
- 6 Flashes
- 7 Flashes
- 8 Flashes

### STATUS LED

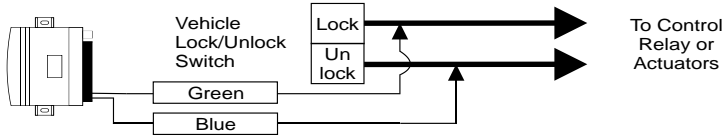
- Series of 3 Flashes
- LED's On Solid
- Series of 4 Flashes
- Series of 5 Flashes
- Series of 5 Flashes
- Series of 6 Flashes
- Series of 7 Flashes
- Series of 8 Flashes

### DIAGNOSTIC CODE

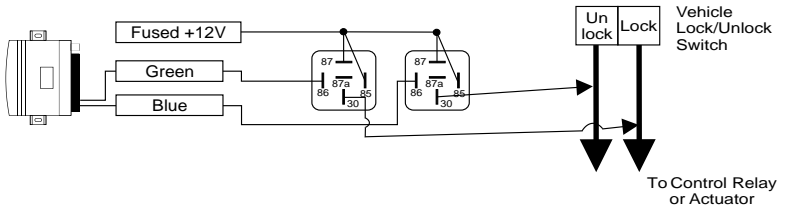
- Door Opened "M" Models
- System Is In Service Mode
- Not in Reservation Mode "M" units
- Brake Pedal Shutdown
- Ignition On During Start Attempt
- Hood Pin Grounded
- Tach Lock-Out
- 3 Start Attempts with no start

# 2600 RELAY DIAGRAMS Installation Guide

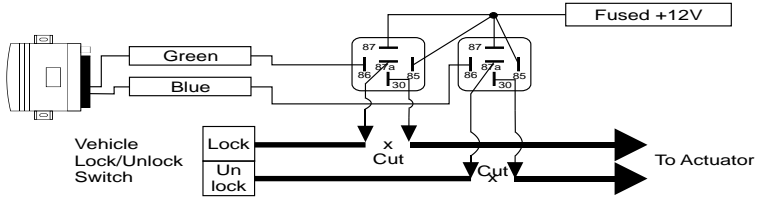
## Negative Door Locks



## Positive Type Door Locks



## 5 Wire / Reverse Polarity Type Door Locks



## Built-in Starter Disable

